

E Storage

The "MultiRail runner" should **not** under normal circumstances be left on the system, as it contains moving parts. However, the "MultiRail runner" may be left on the system if it is within a building and contamination is kept within acceptable limits.

F Care

Whenever the "MultiRail runner" is used, check that the rollers can move freely and are not deformed. This check must be carried out even if the "MultiRail runner" is left in the system.

Further remarks

Instructions for use and maintenance

MultiRail Runner horizontal

Runner complying with EN 795
Part. No. 24168

Serial number: _____

Year of manufacture: _____ Date of purchase: _____

(The following must be completed by the operator in permanent waterproof ink.)

Date of initial operation: _____

Operator/user: _____

Street: _____

Place: _____

Phone: _____ Fax: _____

Issue: 21.12.2005
SE 33



Table of content

	Page
A Safety precautions	3
B Checking before use	4
C Using the runner	5
D Maintenance	8
E Storage	12
F Care	12

These instructions are protected by copyright!
 They may not be reproduced and distributed in any ways/ by any means without prior written consent of the author according to Articles 16 and 17 of the German Copyright Act.
 Christian Dalloz Holding Deutschland GmbH & Co. KG will prosecute any violations against this under Article 106 of the German Copyright Act.

In this issue the following has been changed:
 Completely amended due to technical modification of the fall arrester.

Item 3	Wheel plate (1.3)	free of dirty	no visible deformation	Screw and cap nut damaged
Item 4	rollers (1.4)	Guide rollers run smoothly	Sockets are firm, safety ring available	no visible deformation
Further remarks	Cylinder head screw			

Maintenance checklist, see Fig. 3/4

	1	2	3	4	5
Year					
Date					
Name of the specialist					
Signature					
Reason for the revision*					
Ext. Inspection is due					
Item 1					
Connection part (1.1)					
Free of dirt					
Marking available and legible					
no visible deformation					
Item 2					
Anchorage eyelet (1.2)					
no visible deformation					
Does not have any cracks					
Welding seam is not damaged					

**U* (Regular inspection) or *I* (Maintenance)

A Safety precautions

- A 1. These instructions must be brought to the attention of any person using the „MultiRail“ system before he begins to use the system. Actions contravening these instructions may endanger the safety of the User!
- A 2. The owner of the Söll-"MultiRail" anchorage device must ensure that these instructions are:
 - retained in a dry and secure condition at the installation or
 - retained by the operator, whereby he must ensure that the user is aware of the storage location of these instructions and that the documents and that they are anytime easily available.
- A 3. The operator must be able to present these instructions to the manufacturer of the SÖLL - system; (Christian Dalloz Holding Deutschland GmbH & Co. KG or one of its authorized dealers) upon request. These instructions must be enclosed when returning in the "MultiRail runner".
- A 4. The respective instructions must be observed when assembling, installing or using Söll accessories with this Söll „MultiRail runner".
- A 5. The respective instructions must be observed when using other personal protection equipment.
- A 6. The "MultiRail runner" is part of the Söll „MultiRail“ system and as personal safety equipment has been designed only for correct use with the Söll MultiRail system.
- A 7. Söll „MultiRail runners" may only be fitted and operated with original Söll components / elements. **Combining with components and/or elements from other manufacturers can adversely affect the safety of the Söll „MultiRail“ system. In these situations Söll GmbH and their dealers will reject any claims for product liability!**

In addition, such cases are completely unauthorised, as Söll runners are tested and certified as complete systems. Full liability is therefore transferred to the operator!
- A 8. The "MultiRail runner" may only be used with overhead "MultiRail" systems, appropriate connecting sub-system (e.g. lanyard or retractable fall arrester) and with full body harnesses according to EN 361.
- A 9. Treat the "MultiRail runner" with care.
- A 10. Before and during use the Söll „MultiRail runner“ must be subjected to visual checks for correct functioning of the system.
- A 11. For the operator's safety it is important that he is in proper state of health and that he is not under the influence of alcohol or drugs.
- A 12. The facility must include a rescue action plan considering all possible emergency cases which may occur during works.

A 13. When the equipment is sold in another country, it is important for the safety of the user that the reseller provides him this manual in the corresponding language of the country concerned.

B Checking before use

- B 1. Before each and every use, check that the "MultiRail runner", and all other equipment are suitable for the task in hand.
- B 2. The Söll „MultiRail“ system may not be used if there are any doubts regarding its safe use, if defects are visible, or if the device has been strained as a result of a fall. It may not be used until written permit is given by a specialist. If necessary, the "MultiRail runner" should be returned to the manufacturer.

Attention!

A specialist is not authorised to carry out repairs!

- B 3. Before each use, it has to be ensured that there is sufficient fall clearance beneath the operator, so that in case of a fall, he cannot strike the ground or against other obstacles.

Fig. 3

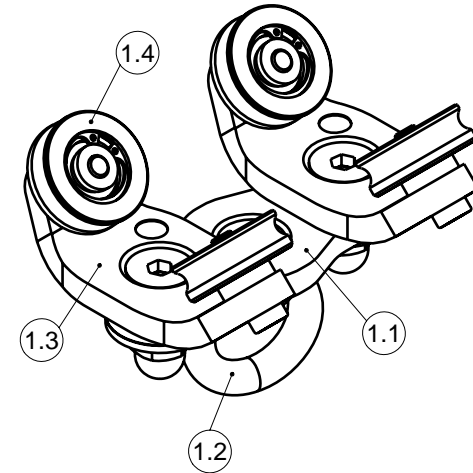
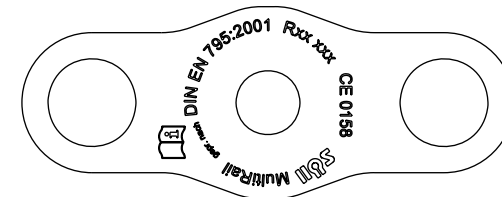




Fig. 4



- | | |
|--|--|
| construction year/serial number | - Rxx xxx |
|  0158 | - Sign and identification number of the notified body controlling the PPE: EXAM BBG Testing and Certification GmbH |
|  | - advice to read the maintenance check list |
| MultiRail device | - type denomination of the anchorage |
| DIN EN 795:2001 | - reference to the European standard |

D Maintenance

- D 1. The regular maintenance of the "MultiRail runner" are to be performed considering the legal regulations, the conditions of use and environmental conditions. Maintenance must be performed by a competent person, at least once a year.

A competent person for the maintenance of this equipment is

a person suitably trained or qualified by knowledge and practical experience to enable the maintenance to be performed properly.

- D 2. Regular maintenance is essential as the safety of the operator depends from the effectiveness and durability of the equipment.

- D 3. **Maintenance checklist** (see fig.3/4)

The checklist has to be completed and signed by a competent person by means of an indelible pen. The single check points have to be marked respectively with "OK" or "D" (defect). The competent person is responsible for the accuracy of the information provided therein. Check points marked with a "D" can be corrected by a competent person only when the defect to be corrected concerns the removal of dirt (paint, mortar, concrete) or when markings need to be cleaned. This procedure must be noted in the annex of the check list (remarks), complete with date and signature of the competent person. The due date of the next regular inspection must also be indicated.

In case the correction of defects requires a partial disassembling of the components, the "MultiRail runner" must be returned to the manufacturer together with the manual and with a relevant comments concerning the defect.

C Using the "MultiRail runner"

The Söll anchorage device may be used only by people who are trained and experienced in the use of the equipment.

Only one user may connect to each "MultiRail runner".

Note!

The „MultiRail“ guide rail must be mounted **overhead!**

The "MultiRail runner" can pass horizontally through curves (i.e.: Part No. 17331).

Fit the EN 361 safety harness in accordance with the applicable instructions.

If using:

- a lanyard with EN 355 energy absorber, attach this to the rear attachment point of the safety harness in accordance with the instructions.

Important!

The energy absorber should always be at the harness end of the lanyard!

- a fall arrester with flexible line (e.g. rope & grab), use only equipment that the manufacturer has guaranteed will also function in the expected direction of fall.
- a retractable fall arrester (EN 360) height safety device, attach it to the eye of the "MultiRail runner" by means of a karabiner.

Important!

Do not use retractable fall arresters for protection when working on bulk materials!

Attention!

Ensure you are in safe position, with other means of fall protection, when connecting to and from the system.

C 1. Mounting/removing the runner

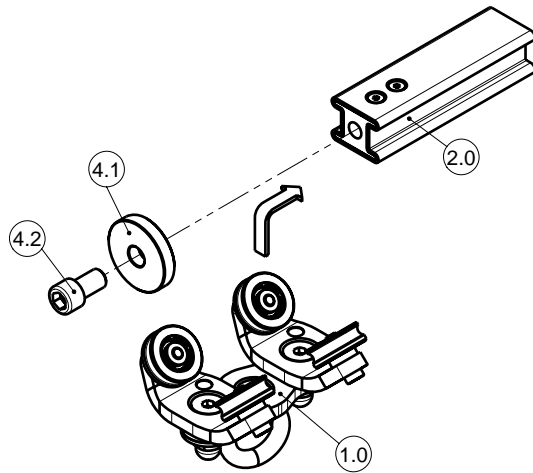
Warning:

Before removing the "MultiRail runner" from the rail, you must take other measures to ensure protection against falls.

1. Alternative:

Use: Fixed rail stop (Part No. 17404)

Fig. 1



Remove the end plate (4.1) of the fixed rail end fitting (order no. 17404) by releasing the bolt (4.2).

Fit the "MultiRail runner" (1.0) on to „MultiRail“ guide rail (2.0).

After fitting the end plate (4.1), secure it using the bolt (4.2) to ensure that the runner cannot run off of the rail unintentionally.

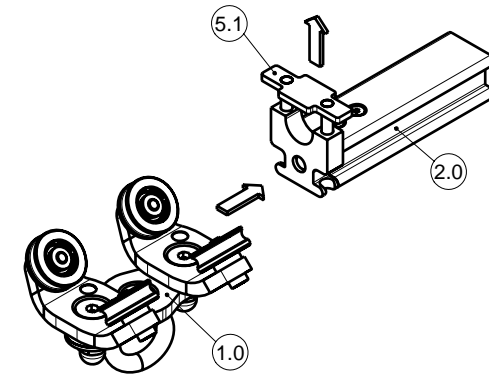
It is now possible to move the "MultiRail runner" freely on the guide rail (2.0).

To **remove** the "MultiRail runner", unscrew the bolt (4.2), remove end plate (4.1) and remove the runner from the rail, then screw the plate back in position.

2. Alternative:

Use: Rail end stop with exit (Part No. 23956)

Fig. 2



With one hand, push the release plate (5.1) upwards and insert "MultiRail runner" (1.0) into the guide rail (2.0) with the other hand.

Now, the "MultiRail runner" can run freely on the guide rail (2.0).

When removing the runner, push the release plate (5.1) upwards and pull the runner from the rail.

Important!

The release plate (5.1) is spring-loaded and may require some effort to open.